

# POUCH LAMINATORS

## HD-32020

### 封塑机系列



### 功能 / Features

- 家用工用 / Pouch Laminator for Office and Home Use.
- 冷热封塑 / Hot & Cold Laminator.
- 小巧,使用方便 / Small Size, Operate Easy.
- 经济款封塑机 / Cost Effective Laminator.

### 参数 / Specification

机器型号/Model	HD-32020
过膜宽度/Laminating Width	320mm
过膜厚度/Laminating Thickness	1mm
过膜速度/Laminating Speed	475mm/min
预热时间/Ready Time	3-5min
胶辊数目/Rollers Quantity	4
胶辊直径/Rollers Diameter	20mm
温度显示方式/Temperature Display	Scale Label
加热系统/Heating Methods	Outside the Roller
机器功率/Machine Power	400W
电机型号/Motor Size	50KTYZ
机器尺寸/Machine Size	442*175*98(mm)
包装尺寸/Pack Size	525*480*220(mm)
包装毛重/净重/G.W/N.W	22/20kg
包装数量/QTY/CTN	4pcs

\*HUANDA reserves the right to change specifications without prior notices.

# POUCH LAMINATORS

## HD-32020A

### 封塑机系列



### 功能 / Features

- 家庭及办公室适用 / Pouch Laminator for Office and Home Use.
- 冷热封塑 / Hot & Cold Laminator.
- 造型设计新颖 / Attractive Appearance.
- 经济款封塑机 / Cost Effective Laminator.

### 参数 / Specification

机器型号/Model	HD-32020A
过膜宽度/Laminating Width	320mm
过膜厚度/Laminating Thickness	1mm
过膜速度/Laminating Speed	475mm/min
预热时间/Ready Time	3-5min
胶辊数目/Rollers Quantity	4
胶辊直径/Rollers Diameter	20mm
温度显示方式/Temperature Display	Scale Label
加热系统/Heating Methods	Outside the Roller
机器功率/Machine Power	400W
电机型号/Motor Size	50KTYZ
机器尺寸/Machine Size	500*239*92(mm)
包装尺寸/Pack Size	560*300*290(mm)
包装毛重/净重/G.W/N.W	22/20kg
包装数量/QTY/CTN	4pcs

\*HUANDA reserves the right to change specifications without prior notices.

# POUCH LAMINATORS

## HD-32020B

### 封塑机系列



### 功能 / Features

- 一键式操作 / One - Touch Operation.
- 液晶显示 / LCD Display.
- 造型新颖 / Elegant Look.
- 全金属外壳 / Metal Body.

### 参数 / Specification

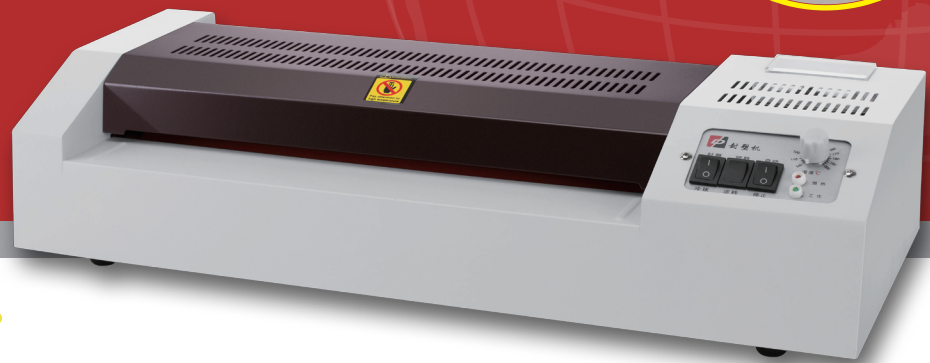
机器型号/Model	HD-32020B
过膜宽度/Laminating Width	320mm
过膜厚度/Laminating Thickness	1mm
过膜速度/Laminating Speed	475mm/min
预热时间/Ready Time	3-5min
胶辊数目/Rollers Quantity	4
胶辊直径/Rollers Diameter	20mm
温度显示方式/Temperature Display	LCD
加热系统/Heating Methods	Outside the Roller
机器功率/Machine Power	400W
电机型号/Motor Size	50KTYZ
机器尺寸/Machine Size	465*176*101(mm)
包装尺寸/Pack Size	525*325*475(mm)
包装毛重/净重/G.W/N.W	22/20kg
包装数量/QTY/CTN	4pcs

\*HUANDA reserves the right to change specifications without prior notices.

# POUCH LAMINATORS

## HD-32019/320/460

### 封塑机系列



### 功能 / Features

- 专业封塑机 / Professional Laminators.
- 简单操作,封塑效果好 / Operate Easy, Good Laminating.
- 符合欧洲国家封塑机标准 / Meets European Safety Standards.
- 高品质冷热封塑机 / Quality Hot and Cold Lamination.

### 参数 / Specification

机器型号/Model	HD-32019	HD-320	HD-460
过膜宽度/Laminating Width	320mm	320mm	460mm
过膜厚度/Laminating Thickness	1mm	1mm	1mm
过膜速度/Laminating Speed	530mm/min	660mm/min	660mm/min
预热时间/Ready Time	3-5min	3-5min	3-5min
胶辊数目/Rollers Quantity	4	4	4
胶辊直径/Rollers Diameter	20mm	26mm	26mm
温度显示方式/Temperature Display	Meter	Meter	Meter
加热系统/Heating Methods	Outside the Roller	Outside the Roller	Outside the Roller
机器功率/Machine Power	500W	600W	700W
电机型号/Motor Size	50KTYZ	60KTYZ	60KTYZ
机器尺寸/Machine Size	500*210*110(mm)	500*210*110(mm)	615*210*110(mm)
包装尺寸/Pack Size	570*280*625(mm)	570*280*330(mm)	700*305*340(mm)
包装毛重/净重/G.W/N.W	27/25kg	16/15kg	23/21kg
包装数量/QTY/CTN	4pcs	2pcs	2pcs

# POUCH LAMINATORS

## HD-320B/460B

### 封塑机系列



### 功能 / Features

- 预热时间仅用3-5分钟 / 3-5 Minutes Warm-up.
- LED显示屏触控式按键 / LED Screen with Touch Button.
- 操作简单方便 / Operate Easy.
- 符合欧洲国家封塑机标准 / Meets European Safety Standards.
- 办公场所最佳选择 / Best Choice for Office.

### 参数 / Specification

机器型号/Model	HD-320B	HD-460B
过膜宽度/Laminating Width	320mm	450mm
过膜厚度/Laminating Thickness	1mm	1mm
过膜速度/Laminating Speed	600mm/min	600mm/min
预热时间/Ready Time	3-5min	3-5min
胶辊数目/Rollers Quantity	4	4
胶辊直径/Rollers Diameter	26mm	26mm
温度显示方式/Temperature Display	LED	LED
加热系统/Heating Methods	Outside the Roller	Outside the Roller
机器功率/Machine Power	600W	700W
电机型号/Motor Size	60KTYZ	60KTYZ
机器尺寸/Machine Size	500*210*100(mm)	615*210*110(mm)
包装尺寸/Pack Size	570*280*330(mm)	700*305*340(mm)
包装毛重/净重/G.W/N.W	17/16kg	23/21kg
包装数量/QTY/CTN	2pcs	2pcs

\*HUANDA reserves the right to change specifications without prior notices.

# POUCH LAMINATORS

## HD-320D/460D

### 封塑机系列



### 功能 / Features

- 高精度传感器测温 / Measure by High-precision Sensor.
- 数字线路板控温系统 / Variable Digital Temperature Control.
- LCD显示温度及故障提示 / LCD Display and Fault Indicating.
- 热保温器 / Overhot Protection.

### 参数 / Specification

机器型号/Model	HD-320D	HD-460D
过膜宽度/Laminating Width	320mm	450mm
过膜厚度/Laminating Thickness	1mm	1mm
过膜速度/Laminating Speed	660mm/min	660mm/min
预热时间/Ready Time	3-5min	3-5min
胶辊数目/Rollers Quantity	4	4
胶辊直径/Rollers Diameter	26mm	26mm
温度显示方式/Temperature Display	LCD	LCD
加热系统/Heating Methods	Outside the Roller	Outside the Roller
机器功率/Machine Power	600W	700W
电机型号/Motor Size	60KTYZ	60KTYZ
机器尺寸/Machine Size	500*210*110(mm)	615*200*110(mm)
包装尺寸/Pack Size	570*280*340(mm)	680*290*325(mm)
包装毛重/净重/G.W/N.W	16/14kg	23/21kg
包装数量/QTY/CTN	2pcs	2pcs

\*HUANDA reserves the right to change specifications without prior notices.

# POUCH LAMINATORS

## HD-260E/320E/460E

### 封塑机系列



### 功能 / Features

- 3款型号分别A4、A3、A2幅面 / A4、A3、A2 Sizes.
- 高质量的冷、热覆膜 / Quality Hot & Cold Lamination.
- 优质4辊LCD显示屏封塑机 / LCD Display, High Quality, 4-Rollers Pouch Laminators.
- 仅需3分钟预热 / Quick Warm-up Time (Only 3 Minutes).
- 适用于每款封塑 / Ideal for Any Standard Laminating Application.

### 参数 / Specification

机器型号/Model	HD-260E	HD-320E	HD-460E
过膜宽度/Laminating Width	260mm	320mm	460mm
过膜厚度/Laminating Thickness	1mm	1mm	1mm
过膜速度/Laminating Speed	600mm/min	660mm/min	660mm/min
预热时间/Ready Time	3-5min	3-5min	3-5min
胶辊数目/Rollers Quantity	4	4	4
胶辊直径/Rollers Diameter	26mm	26mm	26mm
温度显示方式/Display	LCD	LCD	LCD
加热系统/Heating Methods	Outside the Roller	Outside the Roller	Outside the Roller
机器功率/Machine Power	500W	600W	700W
电机型号/Motor Size	60KTYZ	60KTYZ	60KTYZ
机器尺寸/Machine Size	460*220*110(mm)	520*220*110(mm)	620*220*110(mm)
包装尺寸/Pack Size	505*270*315(mm)	580*280*350(mm)	710*280*350(mm)
包装毛重/净重/G.W/N.W	14/13 kg	17/15kg	23/21kg
包装数量/QTY/CTN	2pcs	2pcs	2pcs

\*HUANDA reserves the right to change specifications without prior notices.

# POUCH LAMINATORS

## HD-325

### 封塑机系列



### 功能 / Features

- 造型设计新颖 / Modern Design for Pouch Laminator.
- 多档位调节 / Multitap Adjustment.
- 专业形封塑机 / Professional Laminators.

### 参数 / Specification

机器型号/Model	HD-325
过膜宽度/Laminating Width	325mm
过膜厚度/Laminating Thickness	1mm
过膜速度/Laminating Speed	485mm/min
预热时间/Ready Time	3-5min
胶辊数目/Rollers Quantity	4
胶辊直径/Rollers Diameter	22mm
温度显示方式/Temperature Display	Scale Label
加热系统/Heating Methods	Outside the Roller
机器功率/Machine Power	600W
电机型号/Motor Size	60KTYZ
机器尺寸/Machine Size	500*239*92(mm)
包装尺寸/Pack Size	560*300*290(mm)
包装毛重/净重/G.W/N.W	16/15kg
包装数量/QTY/CTN	2pcs

\*HUANDA reserves the right to change specifications without prior notices.



# POUCH LAMINATORS

## HD-330T ULTRA PLUS

### 封塑机系列



### 功能 / Features

- 冷却风扇长期工作保证机器稳定的温度 / Cooling Fan Assures Stable Temperature for Long-time Operation.
- 30分钟不工作自动进入待机状态 / Auto Stand by System(No Operation Over 30 Minutes).
- 温度超过160°C,不能再加热,直接断电 / Auto Shut Down( the Temperature Over 160°C Will be Cut off).
- 根据各种指令控制速度及温度 / Control System for Speed and Temperature in Various Command.

### 参数 / Specification

机器型号/Model	HD-330T Ultra Plus
过膜宽度/Laminating Width	320mm
过膜厚度/Laminating Thickness	1.2mm
过膜速度/Laminating Speed	400-1400mm/min
预热时间/Ready Time	3-5min
胶辊数目/Rollers Quantity	4
胶辊直径/Rollers Diameter	29.5mm
温度显示方式/Temperature Display	LED
加热系统/Heating Methods	Outside the Roller
机器功率/Power	600W
电机型号/Type of Motor	DC/24V
机器尺寸/Machine Size	505*250*110(mm)
包装尺寸/Pack Size	570*325*315(mm)
包装毛重/净重/G.W/N.W	28/26kg
包装数量/QTY/CTN	2pcs

\*HUANDA reserves the right to change specifications without prior notices.

# POUCH LAMINATORS

## HD-450/550/650

### 封塑机系列



### 功能 / Features

- 高工作量封塑机 / Heavy Workload Professional Pouch Laminators.
- 适用于A2封塑机 / A2 Size Pouch Laminators.
- 可调温调速 / Control System for Speed and Temperature in Various Command.

### 参数 / Specification

机器型号/Model	HD-450	HD-550	HD-650
过膜宽度/Laminating Width	460mm	550mm	650mm
过膜厚度/Laminating Thickness	1.2mm	1.2mm	1.2mm
过膜速度/Laminating Speed	600-1600mm/min	600-1600mm/min	600-1600mm/min
预热时间/Ready Time	3-5min	3-5min	3-5min
胶辊数目/Rollers Quantity	4	4	4
胶辊直径/Rollers Diameter	44mm	44mm	44mm
温度显示方式/Display	LED	LED	LED
加热系统/Heating Methods	Outside the Roller	Outside the Roller	Outside the Roller
机器功率/Machine Power	850W	1000W	1200W
电机型号/Type of Motor	DC/24V	DC/24V	DC/24V
机器尺寸/Machine Size	665*295*135(mm)	765*295*135(mm)	865*295*135(mm)
包装尺寸/Pack Size	830*455*285(mm)	935*455*285(mm)	1120*450*285(mm)
包装毛重/净重/G.W/N.W	25/22kg	30/24kg	35/29kg
包装数量/QTY/CTN	1pcs	1pcs	1pcs

\*HUANDA reserves the right to change specifications without prior notices.

# POUCH LAMINATORS

## HD-S260A/S260B

### 封塑机系列



### 功能 / Features

- 家用工用 / Pouch Laminator for Office and Home Use.
- 液晶显示 / LCD Display.
- 小巧,使用方便 / Small Size Operate Easy.
- 经济款封塑机 / Cost Effective Laminator.

### 参数 / Specification

机器型号/Model	HD-S260A	HD-S260B
过膜宽度/Laminating Width	260mm	260mm
过膜厚度/Laminating Thickness	1mm	1mm
过膜速度/Laminating Speed	475mm/min	475mm/min
预热时间/Ready Time	3-5min	3-5min
胶辊数目/Rollers Quantity	4	4
胶辊直径/Rollers Diameter	20mm	20mm
温度显示方式/Temperature Display	Scale Label	LCD
加热系统/Heating Methods	Outside the Roller	Outside the Roller
机器功率/Machine Power	500W	500W
电机型号/Motor Size	50KTYZ	50KTYZ
机器尺寸/Machine Size	405*170*95(mm)	405*170*95(mm)
包装尺寸/Pack Size	460*220*290(mm)	460*220*290(mm)
包装毛重/净重/G.W/N.W	10/9kg	10/9kg
包装数量/QTY/CTN	2pcs	2pcs

\*HUANDA reserves the right to change specifications without prior notices.

# POUCH LAMINATORS

## HD-S320

### 封塑机系列



### 功能 / Features

- 冷热封塑 / Hot & Cold Laminator.
- 多档位调节 / Multitap Adjustment.
- 简单操作,封塑效果好 / Operate Easy,Laminating Perfect.
- 符合欧美国国家封塑机标准 / Meets European Safety Standards.

### 参数 / Specification

机器型号/Model	HD-S320
过膜宽度/Laminating Width	320mm
过膜厚度/Laminating Thickness	1mm
过膜速度/Laminating Speed	660mm/min
预热时间/Ready Time	3-5min
胶辊数目/Rollers Quantity	4
胶辊直径/Rollers Diameter	25mm
最高温度/Max. Temperature	160°C
温度显示方式/Temperature Display	Scale Label
加热系统/Heating Methods	Outside the Roller
机器功率/Machine Power	600W
电机型号/Motor Size	60KTYZ
机器尺寸/Machine Size	500*210*110(mm)
包装尺寸/Pack Size	570*270*330(mm)
包装毛重/净重/G.W/N.W	14.5/13kg
包装数量/QTY/CTN	2pcs

\*HUANDA reserves the right to change specifications without prior notices.

# POUCH LAMINATORS

## HD-S325

### 封塑机系列



### 功能 / Features

- 家庭及办公室适用 / Pouch Laminator for Office and Home Use.
- 冷热封塑 / Hot & Cold Laminator.
- 造型设计新颖 / Modern Design.
- 经济款封塑机 / Cost Effective Laminator.

### 参数 / Specification

机器型号/Model	HD-S325
过膜宽度/Laminating Width	325mm
过膜厚度/Laminating Thickness	1mm
过膜速度/Laminating Speed	470mm/min
预热时间/Ready Time	3-5min
胶辊数目/Rollers Quantity	4
胶辊直径/Rollers Diameter	24mm
最高温度/Max. Temperature	160°C
温度显示方式/Temperature Display	Scale Label
加热系统/Heating Methods	Outside the Roller
机器功率/Machine Power	600W
电机型号/Motor Size	50KTYZ
机器尺寸/Machine Size	477*190*110(mm)
包装尺寸/Pack Size	550*280*300(mm)
包装毛重/净重/G.W/N.W	12/11kg
包装数量/QTY/CTN	2pcs

\*HUANDA reserves the right to change specifications without prior notices.

# POUCH LAMINATOR

## HD-440/540/640

### 封塑机系列



## 功能 / Features

- 超大LCD显示屏 / Large LCD Display.
- 63mm超大胶辊 / Big Rollers at 63mm Diameter.
- 过膜快速可调, 1-9档 / High Speed, Variable Temperature & Speed Control.
- 塑封冷裱加工的最佳选择 / Perfect for Hot and Cold Laminating.

## 参数 / Specification

机器型号/Model	HD-440	HD-540	HD-640
过膜宽度/Laminating Width	440mm	540mm	640mm
过膜厚度/Laminating Thickness	2.5mm	2.5mm	2.5mm
过膜速度/Laminating Speed	600-2000mm/min	600-2000mm/min	600-2000mm/min
预热时间/Ready Time	5-8min	5-8min	5-8min
胶辊数目/Rollers Quantity	4	4	4
胶辊直径/Rollers Diameter	63mm	63mm	63mm
最高温度/Max. Temperature	160°C	160°C	160°C
温度显示方式/Display	LCD	LCD	LCD
加热系统/Heating Methods	Inside the Roller	Inside the Roller	Inside the Roller
机器功率/Machine Power	1100W	1300W	1500W
电机型号/Type of Motor	DC/24V	DC/24V	DC/24V
机器尺寸/Machine Size	702*420*240(mm)	802*420*240(mm)	902*420*240(mm)
包装尺寸/Pack Size	820*580*380(mm)	910*640*450(mm)	1080*640*450(mm)
包装毛重/净重/G.W/N.W	42/38kg	46/42kg	50/46kg
包装数量/QTY/CTN	1pcs	1pcs	1pcs

\*HUANDA reserves the right to change specifications without prior notices.

# POUCH LAMINATORS

## HD-3304

### 封塑机系列



## 功能 / Features

- 液晶显示温度、风扇、速度状态 / LCD Display: Temperature、Fan、Speed Status.
- 速度快并可调: 1-9档, 温度可自定义设置 / High Speed, Variable Temperature & Speed Control.
- 适用范围广 / Extensive Application Scope.

## 参数 / Specification

机器型号/Model	HD-3304
过膜宽度/Laminating Width	330mm
过膜厚度/Laminating Thickness	3mm
过膜速度/Laminating Speed	600-2100mm/min
预热时间/Ready Time	5-8min
胶辊数目/Rollers Quantity	4
胶辊直径/Rollers Diameter	44mm
最高温度/Max. Temperature	160°C
温度显示方式/Display	LCD
加热系统/Heating Methods	Inside the Roller
机器功率/Machine Power	1000W
电机型号/Type of Motor	DC/24V
机器尺寸/Machine Size	520*356*182(mm)
包装尺寸/Pack Size	615*455*285(mm)
包装毛重/净重/G.W/N.W	25/22kg
包装数量/QTY/CTN	1pcs

\*HUANDA reserves the right to change specifications without prior notices.

# POUCH LAMINATORS

## HD-3306

### 封塑机系列



## 功能 / Features

- 超大LCD显示屏 / Large LCD Display.
- 6个胶辊, 封塑机 / 6 Rollers, Hot & Cold Laminating.
- 快速可调, 1-9档 / High Speed, Variable Temperature & Speed Control.
- 过膜效果佳 / Laminating Efficiently.
- 触摸按键 / Touch Control.

## 参数 / Specification

机器型号/Model	HD-3306
过膜宽度/Laminating Width	330mm
过膜厚度/Laminating Thickness	1.5mm
过膜速度/Laminating Speed	400-1400mm/min
预热时间/Ready Time	5-8min
胶辊数目/Rollers Quantity	6
胶辊直径/Rollers Diameter	29mm
最高温度/Max. Temperature	160°C
温度显示方式/Display	LCD
加热系统/Heating Methods	Inside the Roller
机器功率/Machine Power	1000W
马达型号/Type of Motor	DC/24V
机器尺寸/Machine Size	492*320*160(mm)
包装尺寸/Pack Size	665*465*295(mm)
包装毛重/净重/G.W/N.W	18/16kg
包装数量/QTY/CTN	1pcs

\*HUANDA reserves the right to change specifications without prior notices.



# POUCH LAMINATORS

## HD-3306C

### 封塑机系列



## 功能 / Features

- 温度显示状态、风扇是否启动，速度档位 / LCD Display: Temperature、Fan、Speed Status.
- 6个胶辊：4个热，2个冷，过膜效果较好 / 4 Hot & 2 Cold Rollers Good Laminating.
- 速度快并可调：1-9档，温度自己设置 / High Speed, Variable Temperature & Speed Control.
- 适用范围广 / Extensive Application Scope.

## 参数 / Specification

机器型号/Model	HD-3306C
过膜宽度/Laminating Width	330mm
过膜厚度/Laminating Thickness	3mm
过膜速度/Laminating Speed	600-2100mm/min
预热时间/Ready Time	5-8min
胶辊数目/Rollers Quantity	6
胶辊直径/Rollers Diameter	36mm
最高温度/Max. Temperature	160°C
温度显示方式/Display	LCD
加热系统/Heating Methods	Inside the Roller
机器功率/Machine Power	1200W
电机型号/Type of Motor	DC/24V
机器尺寸/Machine Size	520*356*165(mm)
包装尺寸/Pack Size	620*455*285(mm)
包装毛重/净重/G.W/N.W	27/22kg
包装数量/QTY/CTN	1pcs

\*HUANDA reserves the right to change specifications without prior notices.

# POUCH LAMINATORS

## HD-3308

### 封塑机系列



## 功能 / Features

- 超大LCD显示屏 / Large LCD Display.
- 8个胶辊, 专业封塑机 / 8 Rollers, Professional Laminator.
- 快速可调, 1-9档 / High Speed, Variable Temperature & Speed Control.
- 过膜效果佳 / Laminating Efficiently.
- 触摸按键 / Touch Control.

## 参数 / Specification

机器型号/Model	HD-3308
过膜宽度/Laminating Width	330mm
过膜厚度/Laminating Thickness	1.5mm
过膜速度/Laminating Speed	900-2300mm/min
预热时间/Ready Time	5-8min
胶辊数目/Rollers Quantity	8
胶辊直径/Rollers Diameter	32mm
最高温度/Max. Temperature	160°C
温度显示方式/Display	LCD
加热系统/Heating Methods	Inside the Roller
机器功率/Machine Power	1400W
电机型号/Type of Motor	DC/24V
机器尺寸/Machine Size	500*380*190(mm)
包装尺寸/Pack Size	680*530*315(mm)
包装毛重/净重/G.W/N.W	27/23kg
包装数量/QTY/CTN	1pcs

\*HUANDA reserves the right to change specifications without prior notices.

# BOOK BINDER

## HD-M10

### 装订机系列



## 功能 / Features

- 打孔, 装订两用 / Multifunction, Punching and Binding.
- 15针 / 15 Punching Hole Quantity.
- 全铝型材外壳, 美观耐用 / Aluminum Casing, Elegant and Durable.
- 人性化设计使用方便 / Humanized Design, Use Easy.

## 参数 / Specification

机器型号/Model	HD-M10
打孔孔数/Punching Hole Quantity	15
打孔页数/Punching Capacity	30 Sheets of 70gsm Paper/Time
打孔方式/Punching Methods	Manual
最大装订厚度/Max.Binding Thickness	50mm
最大装订幅面/Max.Binding Size	A2
机器功率/Machine Power	60W
机器尺寸/Machine Size	500*415*160(mm)
包装尺寸/Pack Size	560*430*295(mm)
包装毛重/净重/G.W/N.W	13/11kg
包装数量/QTY/CTN	1pcs

\*HUANDA reserves the right to change specifications without prior notices.

# BOOK BINDER

## HD-M20/HD-M30

### 装订机系列



## 功能 / Features

- 打孔装订一体机 / Punching and Binding Machine.
- 一键式操作, 简单方便 / One-button Operation.
- 操作简单 / Use Easy.

## 参数 / Specification

机器型号/Model	HD-M20	HD-M30
打孔孔数/Punching Hole Quantity	12	12
打孔页数/Punching Capacity	30 sheets of 70gsm paper/time	30 Sheets of 70gsm Paper/Time
打孔方式/Punching Methods	Manual	Electric
最大装订厚度/Max.Binding Thickness	50mm	50mm
最大装订幅面/Max.Binding Size	376mm	376mm
机器功率/Machine Power	50W	150W
机器尺寸/Machine Size	650*450*260(mm)	500*450*260(mm)
包装尺寸/Pack Size	785*560*325(mm)	785*560*325(mm)
包装毛重/净重/G.W/N.W	20/17kg	24/21kg
包装数量/QTY/CTN	1pcs	1pcs

\*HUANDA reserves the right to change specifications without prior notices.

# BOOK BINDER

## HD-ZY1

### 订折机系列



### 功能 / Features

- 装订折页一体机(手动) / Binding and Folding Machine(Manual).
- 超高性价比 / High Cost-effective.
- 操作简单 / Use Easy.

### 参数 / Specification

机器型号/Model	HD-ZY1
最大装订页数/Bind Capacity	20 Sheets 70g/m <sup>2</sup>
最大装订幅面/Max: Size	A3
装订速度/Speed	500 Books/Hour
机器功率/Machine Power	60W
装订方式/Binding Methods	Manual
机器尺寸/Machine Size	495*395*150(mm)
包装尺寸/Pack Size	575*450*215(mm)
包装毛重/净重/G.W/N.W	17/15kg
包装数量/QTY/CTN	1pcs

\*HUANDA reserves the right to change specifications without prior notices.

# BOOK BINDER

## HD-ZY2

### 订折机系列



## 功能 / Features

- 自动装订 / Automatic Binding.
- 可订可折 / Binding and Folding Machine.
- 操作简单 / Use Easy.
- 应用广泛 / Extensive Application Scope.

## 参数 / Specification

机器型号/Model	HD-ZY2
最大装订页数/Bind Capacity	14 Sheets 70g/m <sup>2</sup>
最大装订幅面/Max: Size	A3
装订速度/Speed	800 Books/Hour
机器功率/Machine Power	60W
装订方式/Binding Methods	Manual/Automatic
机器尺寸/Machine Size	550*520*360(mm)
包装尺寸/Pack Size	700*675*500(mm)
包装毛重/净重/G.W/N.W	55/36kg
包装数量/QTY/CTN	1pcs

\*HUANDA reserves the right to change specifications without prior notices.

# BOOKLET MAKING MACHINE

## HD-ZY3+

### 订折机系列



## 功能 / Features

- 装订成本低 / Iron Wire as Binding Material, Lowcost.
- 有侧拍功能,纸张输送系统 / With Paper Side Pat Function, Canmake Papers Tight When Binding.

## 参数 / Specification

机器型号/Model	HD-ZY3
装订幅面/Paper Size	A5-SRA3
装订速度/Binding Speed	2600本/小时 (A4)
装订厚度/Binding Thickness	平订最多50张, 骑马订最多30张 (70克纸) Flat Binding 50 Sheets /Saddle Binding 30 Sheets of 70 Gsm Paper
装订种类/Binding Type	骑马订/平订/角订/只折不订 Horse-Ride Binding /Flat Binding /Comer Binding /Just Folding Not to Binding
装订钉头数目/Binding Heads Quantity	2
装订铁丝/Binding Wire Disc	No.25-26铁丝盘直径0.4mm-0.6mm No.25-26, the disc diameter is 0.4mm-0.6mm
机器功率/Power Consumption	450W
显示方式/Display	LCD Touch Control Screen
适用钉头/Binding Heads	德国hohner或同类国产订单43/6S Hoher Binding Heads Made in Germany or Chinese Binding Heads 43/6S
钉头样式/Staple Type	Butterfly Shape; Flat Angle (蝴蝶状, 平角)
机器尺寸/Machine Size	1360*600*900(mm)
包装尺寸/Packing Size	960*715*1210(mm)
包装毛重/净重/G.W/N.W	165/135kg

\*HUANDA reserves the right to change specifications without prior notices.

# BOOKLET MAKING MACHINE

## HD-ZY4

### 订折机系列



## 功能 / Features

- 自动、快速、高效 / Automatic、High speed、Efficient.
- 可连接配页机、修边机等配套设备 / Can be Connected to Collating Machine and Edge Trimmer Etc.
- 装订、对折一次性完成，省时省力 / Binding and Folding One Complete Operation, Save Labor and Time.
- 骑马钉、平订、平角订，简易转换 / Saddle Stitching、Flat Binding、Corner Binding, Simple Mode Conversion.
- 铁丝盘装订，经济实惠，简易拆卸钉头，便于维护修理 / Roll of Wire for Binding Cost-effective Easy to Disassemble and Maintain.

## 参数 / Specification

机器型号/Model	HD-ZY4
最大装订幅面/Paper Size	Min. 130m*210mm Max.340m*480mm
装订速度/Binding Speed	2600 Books/Hour
装订厚度/Binding Thickness	平订40张/骑马订30张(70克纸) Flat Binding 40 Sheets /Saddle Binding 30 Sheets of 70 Gsm Paper
装订种类/Binding Type	骑马订/平订/角订/只折不订 Horse-Ride Binding /Flat Binding /Comer Binding /Just Folding Not to Binding
装订钉头数目/Binding Heads Quantity	6
装订铁丝/Binding Wire Disc	No.25-26铁丝直径0.4mm-0.6mm No.25-26, the disc diameter is 0.4mm-0.6mm
机器功率/Power Consumption	450W
显示方式/Display	LCD Touch Control Screen
适用钉头/Binding Heads	德国hohner或同类国产钉头6S Hoher Binding Heads Made in Germany or Chinese Binding Heads 6S
钉头样式/Staple Type	Butterfly Shape; Flat Angle (蝴蝶状, 平角)
机器尺寸/Machine Size	1400*600*900(mm)
包装尺寸/Packing Size	960*715*1210(mm)
包装毛重/净重/G.W/N.W	170/135kg

\*HUANDA reserves the right to change specifications without prior notices.



# BOOK BINDER

## HD-M10

### 装订机系列



## 功能 / Features

- 打孔, 装订两用 / Multifunction, Punching and Binding.
- 15针 / 15 Punching Hole Quantity.
- 全铝型材外壳, 美观耐用 / Aluminum Casing, Elegant and Durable.
- 人性化设计使用方便 / Humanized Design, Use Easy.

## 参数 / Specification

机器型号/Model	HD-M10
打孔孔数/Punching Hole Quantity	15
打孔页数/Punching Capacity	30 Sheets of 70gsm Paper/Time
打孔方式/Punching Methods	Manual
最大装订厚度/Max.Binding Thickness	50mm
最大装订幅面/Max.Binding Size	A2
机器功率/Machine Power	60W
机器尺寸/Machine Size	500*415*160(mm)
包装尺寸/Pack Size	560*430*295(mm)
包装毛重/净重/G.W/N.W	13/11kg
包装数量/QTY/CTN	1pcs

\*HUANDA reserves the right to change specifications without prior notices.

# BOOK BINDER HD-M20/HD-M30 装订机系列



## 功能 / Features

- 打孔装订一体机 / Punching and Binding Machine.
- 一键式操作, 简单方便 / One-button Operation.
- 操作简单 / Use Easy.

## 参数 / Specification

机器型号/Model	HD-M20	HD-M30
打孔孔数/Punching Hole Quantity	12	12
打孔页数/Punching Capacity	30 sheets of 70gsm paper/time	30 Sheets of 70gsm Paper/Time
打孔方式/Punching Methods	Manual	Electric
最大装订厚度/Max.Binding Thickness	50mm	50mm
最大装订幅面/Max.Binding Size	376mm	376mm
机器功率/Machine Power	50W	150W
机器尺寸/Machine Size	650*450*260(mm)	500*450*260(mm)
包装尺寸/Pack Size	785*560*325(mm)	785*560*325(mm)
包装毛重/净重/G.W/N.W	20/17kg	24/21kg
包装数量/QTY/CTN	1pcs	1pcs

\*HUANDA reserves the right to change specifications without prior notices.

# BOOK BINDER

## HD-ZY1

### 订折机系列



### 功能 / Features

- 装订折页一体机(手动) / Binding and Folding Machine(Manual).
- 超高性价比 / High Cost-effective.
- 操作简单 / Use Easy.

### 参数 / Specification

机器型号/Model	HD-ZY1
最大装订页数/Bind Capacity	20 Sheets 70g/m <sup>2</sup>
最大装订幅面/Max: Size	A3
装订速度/Speed	500 Books/Hour
机器功率/Machine Power	60W
装订方式/Binding Methods	Manual
机器尺寸/Machine Size	495*395*150(mm)
包装尺寸/Pack Size	575*450*215(mm)
包装毛重/净重/G.W/N.W	17/15kg
包装数量/QTY/CTN	1pcs

\*HUANDA reserves the right to change specifications without prior notices.

# BOOK BINDER

## HD-ZY2

### 订折机系列



## 功能 / Features

- 自动装订 / Automatic Binding.
- 可订可折 / Binding and Folding Machine.
- 操作简单 / Use Easy.
- 应用广泛 / Extensive Application Scope.

## 参数 / Specification

机器型号/Model	HD-ZY2
最大装订页数/Bind Capacity	14 Sheets 70g/m <sup>2</sup>
最大装订幅面/Max: Size	A3
装订速度/Speed	800 Books/Hour
机器功率/Machine Power	60W
装订方式/Binding Methods	Manual/Automatic
机器尺寸/Machine Size	550*520*360(mm)
包装尺寸/Pack Size	700*675*500(mm)
包装毛重/净重/G.W/N.W	55/36kg
包装数量/QTY/CTN	1pcs

\*HUANDA reserves the right to change specifications without prior notices.

# BOOKLET MAKING MACHINE

## HD-ZY3+

### 订折机系列



## 功能 / Features

- 装订成本低 / Iron Wire as Binding Material, Lowcost.
- 有侧拍功能,纸张输送系统 / With Paper Side Pat Function, Canmake Papers Tight When Binding.

## 参数 / Specification

机器型号/Model	HD-ZY3
装订幅面/Paper Size	A5-SRA3
装订速度/Binding Speed	2600本/小时 (A4)
装订厚度/Binding Thickness	平订最多50张, 骑马订最多30张 (70克纸) Flat Binding 50 Sheets /Saddle Binding 30 Sheets of 70 Gsm Paper
装订种类/Binding Type	骑马订/平订/角订/只折不订 Horse-Ride Binding /Flat Binding /Comer Binding /Just Folding Not to Binding
装订钉头数目/Binding Heads Quantity	2
装订铁丝/Binding Wire Disc	No.25-26铁丝盘直径0.4mm-0.6mm No.25-26, the disc diameter is 0.4mm-0.6mm
机器功率/Power Consumption	450W
显示方式/Display	LCD Touch Control Screen
适用钉头/Binding Heads	德国hohner或同类国产订单43/6S Hoher Binding Heads Made in Germany or Chinese Binding Heads 43/6S
钉头样式/Staple Type	Butterfly Shape; Flat Angle (蝴蝶状, 平角)
机器尺寸/Machine Size	1360*600*900(mm)
包装尺寸/Packing Size	960*715*1210(mm)
包装毛重/净重/G.W/N.W	165/135kg

\*HUANDA reserves the right to change specifications without prior notices.

# BOOKLET MAKING MACHINE

## HD-ZY4

### 订折机系列



## 功能 / Features

- 自动、快速、高效 / Automatic、High speed、Efficient.
- 可连接配页机、修边机等配套设备 / Can be Connected to Collating Machine and Edge Trimmer Etc.
- 装订、对折一次性完成，省时省力 / Binding and Folding One Complete Operation, Save Labor and Time.
- 骑马钉、平订、平角订，简易转换 / Saddle Stitching、Flat Binding、Corner Binding, Simple Mode Conversion.
- 铁丝盘装订，经济实惠，简易拆卸钉头，便于维护修理 / Roll of Wire for Binding Cost-effective Easy to Disassemble and Maintain.

## 参数 / Specification

机器型号/Model	HD-ZY4
最大装订幅面/Paper Size	Min. 130m*210mm Max.340m*480mm
装订速度/Binding Speed	2600 Books/Hour
装订厚度/Binding Thickness	平订40张/骑马订30张(70克纸) Flat Binding 40 Sheets /Saddle Binding 30 Sheets of 70 Gsm Paper
装订种类/Binding Type	骑马订/平订/角订/只折不订 Horse-Ride Binding /Flat Binding /Comer Binding /Just Folding Not to Binding
装订钉头数目/Binding Heads Quantity	6
装订铁丝/Binding Wire Disc	No.25-26铁丝直径0.4mm-0.6mm No.25-26, the disc diameter is 0.4mm-0.6mm
机器功率/Power Consumption	450W
显示方式/Display	LCD Touch Control Screen
适用钉头/Binding Heads	德国hohner或同类国产钉头6S Hoher Binding Heads Made in Germany or Chinese Binding Heads 6S
钉头样式/Staple Type	Butterfly Shape; Flat Angle (蝴蝶状, 平角)
机器尺寸/Machine Size	1400*600*900(mm)
包装尺寸/Packing Size	960*715*1210(mm)
包装毛重/净重/G.W/N.W	170/135kg

\*HUANDA reserves the right to change specifications without prior notices.

# ROLL LAMINATORS

## HD-FM365

### 封塑.覆膜机两用机



### 功能 / Features

- 塑封覆膜两用 / Multifunction, Pouch Laminator and Roll Laminator.
- LCD显示屏及触摸式按键 / LCD Display and Touch Buttons.
- 造型美观时尚 / Stylish and Elegant.

### 参数 / Specification

机器型号/Model	HD-FM365
过膜宽度/Laminating Width	365mm
过膜厚度/Laminating Thickness	1mm
过膜速度/Laminating Speed	550mm/min
预热时间/Ready Time	5-8min
胶辊数目/Rollers Quantity	4
胶辊直径/Rollers Diameter	25mm
最高温度/Max. Temperature	160°C
温度显示方式/Display	LCD
加热系统/Heating Methods	Inside the Roller
机器功率/Machine Power	600W
电机型号/Motor Size	60KTYZ
机器尺寸/Machine Size	560*290*250(mm)
包装尺寸/Pack Size	660*380*350(mm)
包装毛重/净重/G.W/N.W	11/9kg
包装数量/QTY/CTN	1pcs

\*HUANDA reserves the right to change specifications without prior notices.

# ROLL LAMINATORS

## HD-FM350/FM650/FM1055

### 覆膜机系列



### 功能 / Features

- 速度可调 / Variable Speed Control.
- LCD显示屏及触摸式按键 / LCD Display and Touch Buttons.
- 操作简单 / Use Easy.

### 参数 / Specification

机器型号/Model	HD-FM350	HD-FM650	HD-FM1055
过膜宽度/Laminating Width	335mm	635mm	1000mm
过膜厚度/Laminating Thickness	5mm	5mm	5mm
过膜速度/Laminating Speed	550-1500mm/min	550-1500mm/min	550-1500mm/min
预热时间/Ready Time	10-12min	10-12min	10-12min
胶辊数目/Rollers Quantity	4	4	4
胶辊直径/Roller Diameter	54mm	54mm	54mm
最高温度/Max. Temperature	160°C	160°C	160°C
温度显示方式/Display	LCD	LCD	LCD
加热系统/Heating Methods	Inside the Roller	Inside the Roller	Inside the Roller
机器功率/Machine Power	800W	1200W	1400W
电机型号/Motor Size	DC/24V	DC/24V	DC/24V
机器尺寸/Machine Size	630*450*300(mm)	930*450*300(mm)	1350*450*600(mm)
包装尺寸/Pack Size	730*630*440(mm)	1030*600*440(mm)	1460*650*730(mm)
包装毛重/净重/G.W/N.W	50/35 kg	86/65kg	155/115kg
包装数量/QTY/CTN	1pcs	1pcs	1pcs

\*HUANDA reserves the right to change specifications without prior notices.



# ROLL LAMINATORS

## HD-FM380

### 覆膜机系列



### 功能 / Features

- 快速高效 / With Quick Speed and Efficient.
- 加热瓦辅助加热，加热快 / Heating Tile Heat Auxiliary, Heat Quickly.
- LCD显示 操作方便 / LCD Display, Operate Easy.
- 适用范围广泛 / Wide Range of Application.

### 参数 / Specification

机器型号/Model	HD-FM380
过膜宽度/Laminating Width	380mm
过膜厚度/Laminating Thickness	3mm
过膜速度/Laminating Speed	mm/min
预热时间/Ready Time	8-10min
胶辊数目/Rollers Quantity	4
胶辊直径/Roller Diameter	50mm
最高温度/Max. Temperature	180°C
温度显示方式/Temperature Display	LCD
加热系统/Heating Methods	Inside the Roller
机器功率/Machine Power	1600W
电机型号/Motor Size	DC/36V
机器尺寸/Machine Size	601*616*465(mm)
包装尺寸/Pack Size	770*610*770(mm)
包装毛重/净重/G.W/N.W	95/76kg
包装数量/QTY/CTN	1pcs

\*HUANDA reserves the right to change specifications without prior notices.

# ROLL LAMINATORS

## HD-520

### 覆膜机系列



### 功能 / Features

- 内油加热 / Oil Heating.
- 温度均匀稳定 / Temperature Uniform.
- 大幅面, 专业 / Wide-Format Laminating, Professional.

### 参数 / Specification

机器型号/Model	HD-520
过膜宽度/Laminating Width	520mm
过膜厚度/Laminating Thickness	5mm
过膜速度/Laminating Speed	0-8000mm/min
预热时间/Ready Time	15-20min
胶辊数目/Rollers Quantity	6
胶辊直径/Roller Diameter	138mm
最高温度/Max. Temperature	160°C
温度显示方式/Temperature Display	LED
加热系统/Heating Methods	Oil Heating
机器功率/Machine Power	3200W
电机型号/Motor Size	DC/24V
机器尺寸/Machine Size	862*610*1000(mm)
包装尺寸/Pack Size	(mm)
包装毛重/净重/G.W/N.W	kg
包装数量/QTY/CTN	pcs

\*HUANDA reserves the right to change specifications without prior notices.

# GLUE BOOK BINDER

## HD-50

## 胶装机系列



### 功能 / Features

- 优质马达，运转平稳可靠 / High-quality Motor Work Stable.
- 大小铣刀保证装订牢固美观 / High-quality Milling Cutter .

### 参数 / Specification

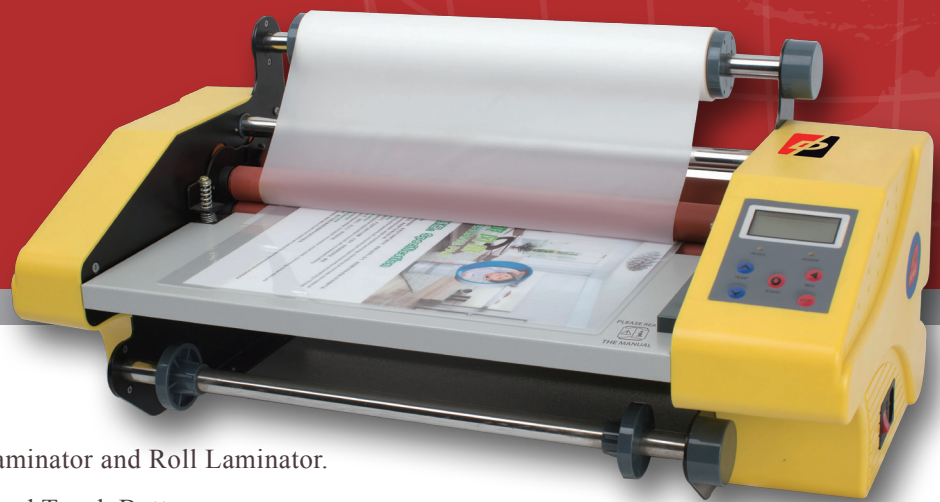
机器型号/Model	HD-50
装订速度/Binding Speed	200 Books/Hour
装订幅面/Max.Binding Size	A3
机器厚度/Binding Thickness	50mm
机器功率/Machine Power	1500W
预热时间/Ready Time	30min
铣刀方式/Milling Cutter	Sun Milling Cutter +Small Milling Cutter
机器尺寸/Machine Size	1380*650*1020(mm)
包装尺寸/Packing Size	1630*770*1120(mm)
包装毛重/净重/G.W/N.W	260/220kg

\*HUANDA reserves the right to change specifications without prior notices.

# ROLL LAMINATORS

## HD-FM365

### 封塑.覆膜机两用机



### 功能 / Features

- 塑封覆膜两用 / Multifunction, Pouch Laminator and Roll Laminator.
- LCD显示屏及触摸式按键 / LCD Display and Touch Buttons.
- 造型美观时尚 / Stylish and Elegant.

### 参数 / Specification

机器型号/Model	HD-FM365
过膜宽度/Laminating Width	365mm
过膜厚度/Laminating Thickness	1mm
过膜速度/Laminating Speed	550mm/min
预热时间/Ready Time	5-8min
胶辊数目/Rollers Quantity	4
胶辊直径/Rollers Diameter	25mm
最高温度/Max. Temperature	160°C
温度显示方式/Display	LCD
加热系统/Heating Methods	Inside the Roller
机器功率/Machine Power	600W
电机型号/Motor Size	60KTYZ
机器尺寸/Machine Size	560*290*250(mm)
包装尺寸/Pack Size	660*380*350(mm)
包装毛重/净重/G.W/N.W	11/9kg
包装数量/QTY/CTN	1pcs

\*HUANDA reserves the right to change specifications without prior notices.

# ROLL LAMINATORS

## HD-FM350/FM650/FM1055

### 覆膜机系列



### 功能 / Features

- 速度可调 / Variable Speed Control.
- LCD显示屏及触摸式按键 / LCD Display and Touch Buttons.
- 操作简单 / Use Easy.

### 参数 / Specification

机器型号/Model	HD-FM350	HD-FM650	HD-FM1055
过膜宽度/Laminating Width	335mm	635mm	1000mm
过膜厚度/Laminating Thickness	5mm	5mm	5mm
过膜速度/Laminating Speed	550-1500mm/min	550-1500mm/min	550-1500mm/min
预热时间/Ready Time	10-12min	10-12min	10-12min
胶辊数目/Rollers Quantity	4	4	4
胶辊直径/Roller Diameter	54mm	54mm	54mm
最高温度/Max. Temperature	160°C	160°C	160°C
温度显示方式/Display	LCD	LCD	LCD
加热系统/Heating Methods	Inside the Roller	Inside the Roller	Inside the Roller
机器功率/Machine Power	800W	1200W	1400W
电机型号/Motor Size	DC/24V	DC/24V	DC/24V
机器尺寸/Machine Size	630*450*300(mm)	930*450*300(mm)	1350*450*600(mm)
包装尺寸/Pack Size	730*630*440(mm)	1030*600*440(mm)	1460*650*730(mm)
包装毛重/净重/G.W/N.W	50/35 kg	86/65kg	155/115kg
包装数量/QTY/CTN	1pcs	1pcs	1pcs

\*HUANDA reserves the right to change specifications without prior notices.

# ROLL LAMINATORS

## HD-FM380

### 覆膜机系列



### 功能 / Features

- 快速高效 / With Quick Speed and Efficient.
- 加热瓦辅助加热，加热快 / Heating Tile Heat Auxiliary, Heat Quickly.
- LCD显示 操作方便 / LCD Display, Operate Easy.
- 适用范围广泛 / Wide Range of Application.

### 参数 / Specification

机器型号/Model	HD-FM380
过膜宽度/Laminating Width	380mm
过膜厚度/Laminating Thickness	3mm
过膜速度/Laminating Speed	mm/min
预热时间/Ready Time	8-10min
胶辊数目/Rollers Quantity	4
胶辊直径/Roller Diameter	50mm
最高温度/Max. Temperature	180°C
温度显示方式/Temperature Display	LCD
加热系统/Heating Methods	Inside the Roller
机器功率/Machine Power	1600W
电机型号/Motor Size	DC/36V
机器尺寸/Machine Size	601*616*465(mm)
包装尺寸/Pack Size	770*610*770(mm)
包装毛重/净重/G.W/N.W	95/76kg
包装数量/QTY/CTN	1pcs

\*HUANDA reserves the right to change specifications without prior notices.

# ROLL LAMINATORS

## HD-520

### 覆膜机系列



### 功能 / Features

- 内油加热 / Oil Heating.
- 温度均匀稳定 / Temperature Uniform.
- 大幅面, 专业 / Wide-Format Laminating, Professional.

### 参数 / Specification

机器型号/Model	HD-520
过膜宽度/Laminating Width	520mm
过膜厚度/Laminating Thickness	5mm
过膜速度/Laminating Speed	0-8000mm/min
预热时间/Ready Time	15-20min
胶辊数目/Rollers Quantity	6
胶辊直径/Roller Diameter	138mm
最高温度/Max. Temperature	160°C
温度显示方式/Temperature Display	LED
加热系统/Heating Methods	Oil Heating
机器功率/Machine Power	3200W
电机型号/Motor Size	DC/24V
机器尺寸/Machine Size	862*610*1000(mm)
包装尺寸/Pack Size	(mm)
包装毛重/净重/G.W/N.W	kg
包装数量/QTY/CTN	pcs

\*HUANDA reserves the right to change specifications without prior notices.

# GLUE BOOK BINDER

## HD-50

## 胶装机系列



### 功能 / Features

- 优质马达，运转平稳可靠 / High-quality Motor Work Stable.
- 大小铣刀保证装订牢固美观 / High-quality Milling Cutter .

### 参数 / Specification

机器型号/Model	HD-50
装订速度/Binding Speed	200 Books/Hour
装订幅面/Max.Binding Size	A3
机器厚度/Binding Thickness	50mm
机器功率/Machine Power	1500W
预热时间/Ready Time	30min
铣刀方式/Milling Cutter	Sun Milling Cutter +Small Milling Cutter
机器尺寸/Machine Size	1380*650*1020(mm)
包装尺寸/Packing Size	1630*770*1120(mm)
包装毛重/净重/G.W/N.W	260/220kg

\*HUANDA reserves the right to change specifications without prior notices.